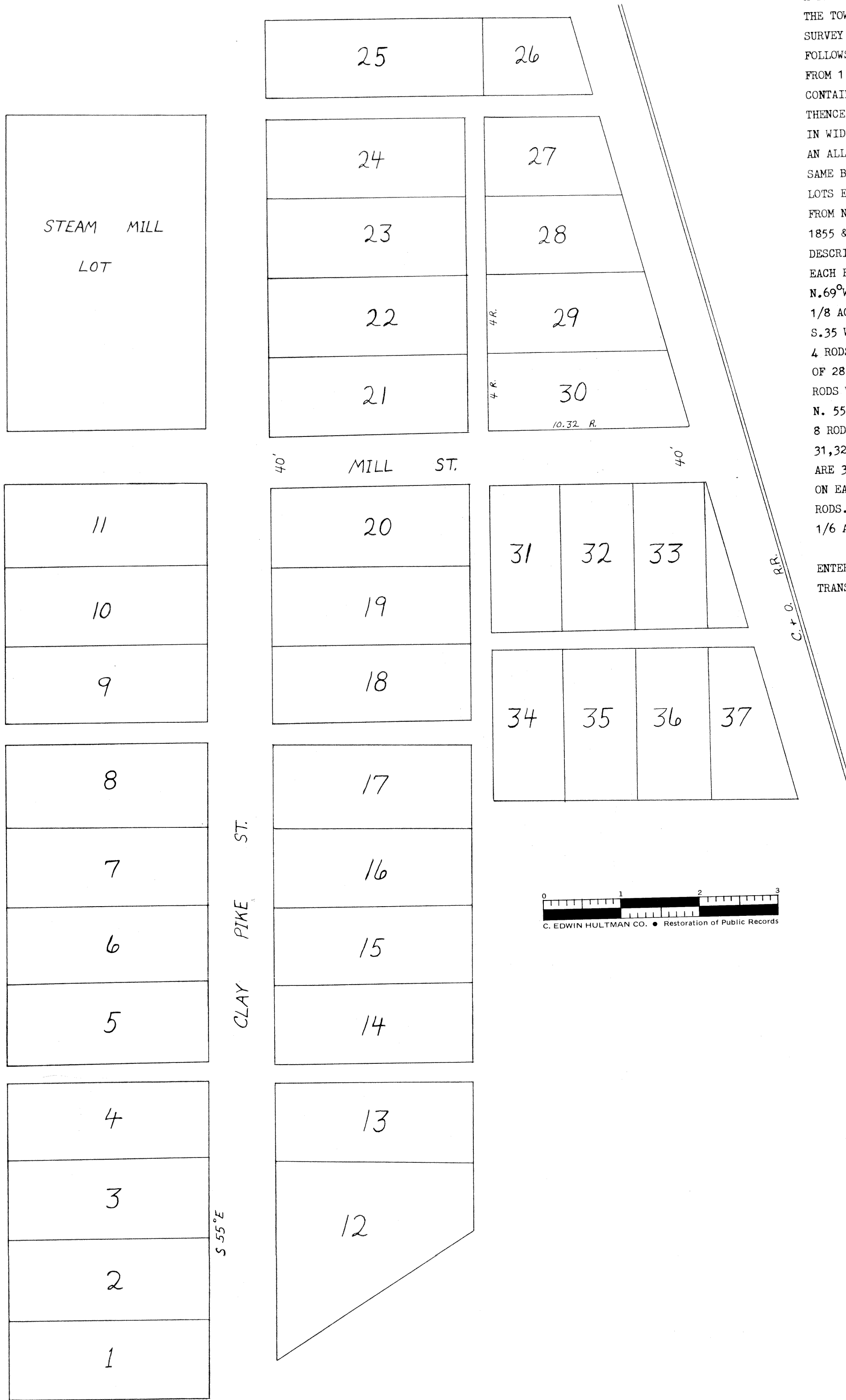


PLAT OF SALESVILLE

PLAT OF THE TOWN OF SALESVILLE



A PLAT OF SURVEY MADE IN TWP. RANGE 7, SEC. 32 IN THE PART OF QUARTER OF WHICH THE TOWN OF SALESVILLE IS BUILT, BEGINNING ON THE WASHINGTON ROAD & THE FIRST SURVEY CONTAINS 20 LOTS & 2 FRACTIONS. THE LOTS ON EACH END ARE BOUNDED AS FOLLOWS S. 55 E. 4 RODS & ON THE SIDES S.35 W. 10 RODS & THE LOTS NUMBERING FROM 1 TO 20 INCLUSIVE CONTAIN 1/2 ACRE EACH. 1 & 2 CONTAIN 1/4 ACRE. SAWMILL LOT CONTAINS 1 ACRE. NO. 21 BEGINS S.55 E. FROM NO. 20 ACROSS A 40 FT. STREET. THENCE IN SAME BEARING FOR LOTS 22,23,24 EACH AND HAVING THE SAME EACH 4 RODS IN WIDTH & 10RODS DEEP ON EACH SIDE, BEARING OF SIDES ARE S.35⁰W. THENCE ACROSS AN ALLEY 16 1/2 FT. WIDE IN THE SAME BEARING S.55 W. TO NO. 25 THENCE 4 RODS & SAME BEARING WHOSE SIDE IS ALSO 10 RODS IN LENGTH & BEAR S.35⁰W. EACH END OF LOTS EXCEPT NO. 1 & 12 ARE 4 RODS & THEIR SIDES 10 RODS. THIS SURVEY WAS DONE FROM NO. 20 TO 25 BY H. JEFFERS FROM 26 TO 37 WAS SURVEYED THE 18th OF APR. 1855 & BEGAN AT A STONE PLANTED IN THE N.W. COR. 30 4" BELOW THE GROUND S.55 E. DESCRIBING 30,29,28,27 THENCE ACROSS A 16 1/2 FT. ALLEY TO NO. 26 ALL 4 RODS ON EACH END & THE ALLEY THENCE S.35⁰W. 4.56 RODS TO THE LAND OF C.O.R.R. THENCE N.69⁰W. TO ALLEY THENCE N.35⁰E. 3.60 RODS TO THE N.W. COR. OF LOT NO. 26 AREA 1/8 ACRE. LOT NO. 27 BEGINS 12 RODS FROM STONE IN CORNER OF 30, S.55 E. 4.31 S.35 W. 58 RODS TO C.O.R.R. LANDS N.69⁰W. TO 28 4.13 RODS. LOTS 28,29,30 ARE 4 RODS ON THE NORTH ENDS 4.13 ON THE S.EAST SIDE OF 28 IS 6.96 RODS. WESTSIDE OF 28 & EAST SIDE OF 29, 8.12 RODS EASTSIDE OF 29 & EASTSIDE OF 30 IS 9.20 RODS WESTSIDE OF 30, 10.32 RODS. THENCE PASS FROM CORNER STONE IN 30, 40 FT. N. 55 W. TO N.E. COR. OF LOT NO. 31 N.55⁰W. 8 RODS TO CENTER OF ALLEY CONTAINS 8 RODS. SAME BEARING TO N.W. COR. OF LOT 34 THENCE 53⁰W. TO S.W. COR. OF 37, 31,32,33 ARE ALSO THE SAME BEARING ON EACH OF THEIR ENDS S.35 W. 31,32,34,35, ARE 3.64 RODS ON EACH END & 8 RODS DEEP. 33,36, ARE 3.36 ON EACH END. NO.37 ON EAST END IS 2.12 RODS ON THE WEST 4.20 RODS, FRACTION OF 33 CONTAINS 5 RODS. AREAS 26-1/8, 27-1/7, 28-2/10, 29-2/10, 30-1/4 ACRE, 31,32,24,25,33,36, 1/6 ACRE EACH. WHOLE ACRE OT LOTS ALLEYS & STREETS 10 1/2 ACRES.

H.A. TEMPLE S.G.C.O.
 ENTERED & RECORDED DEC. 10th, 1855
 ATTEST MOSES MARSH REC.
 TRANSCRIBED FROM DEED RECORD NO. 4 PAGE 24.

