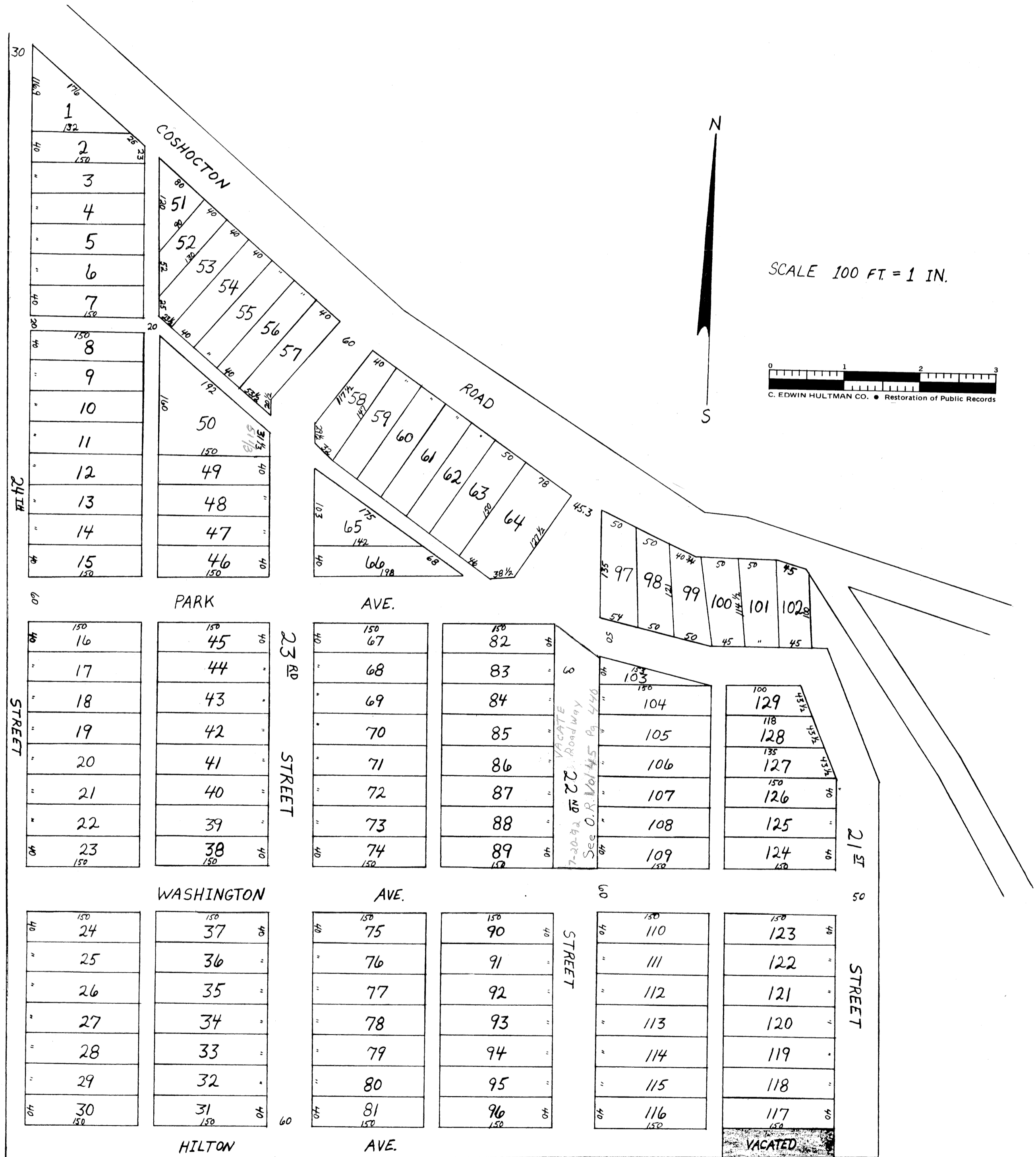


# BROWN HEIGHTS ADDITION

## CAMBRIDGE OHIO



ENTERED JULY 5, 1901 AT 4:00 P.M.  
RECORDED JULY 8, 1901

ATTEST J.C. CROSSEN  
RECORDER

AREA TO BE VACATED  
40' WIDE X 150' IN LENGTH  
SEE MISC. VOL. 7, PG. 400  
RECORDED AUG. 26, 1970  
ROBT. B. BALLANTINE  
RECORDER