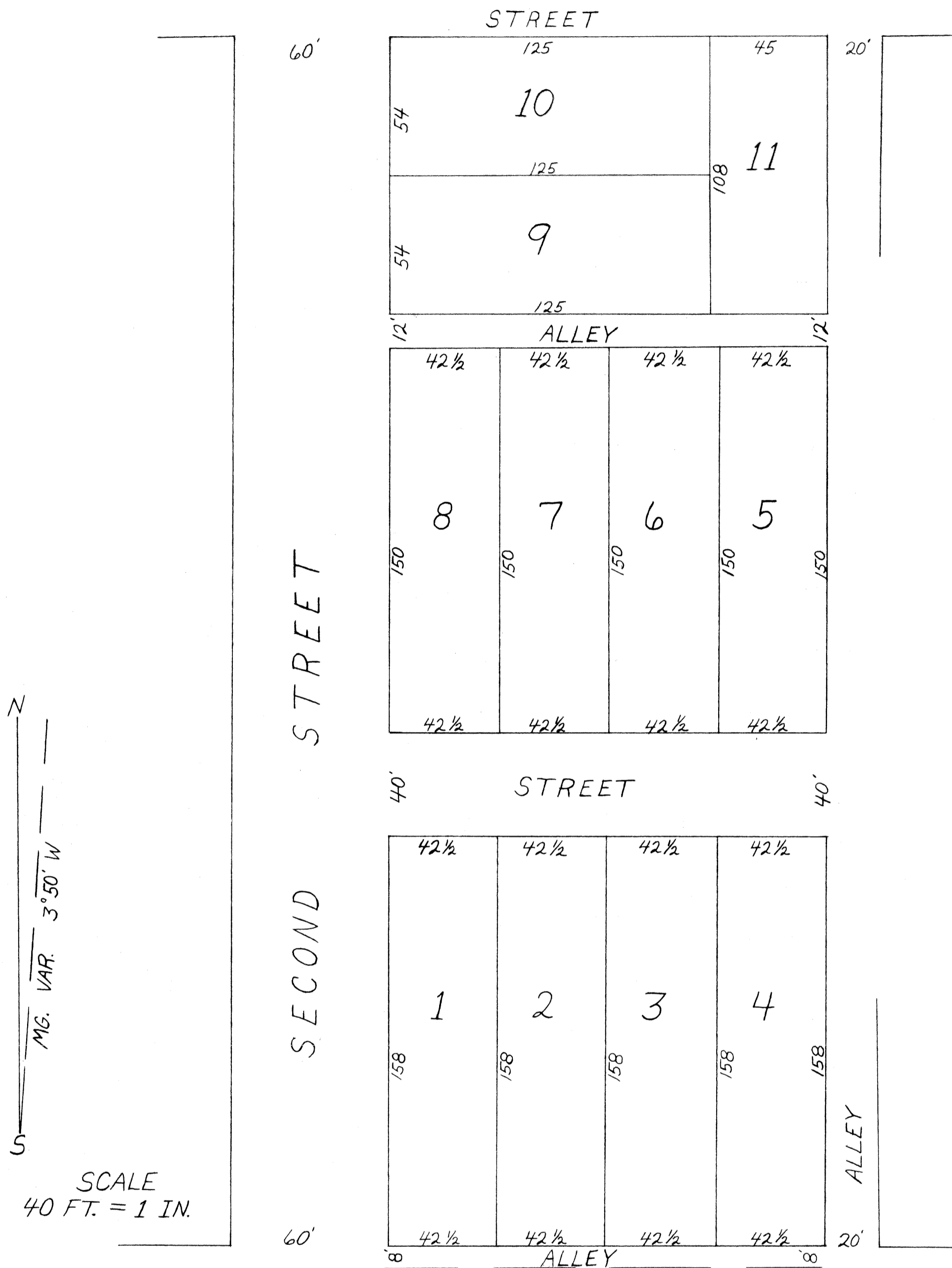


BROOM'S SECOND ADDITION CAMBRIDGE, OHIO



BROOM'S SECOND ADDITION TO CAMBRIDGE

THE ABOVE IS HEREBY CERTIFIED TO BE A CORRECT PLAT OF BROOM'S SECOND ADDITION TO THE VILLAGE OF CAMBRIDGE, OHIO. IT BEING A PART OF THE WEST HALF OF OUT LOT NO. 2 OF LOFLANDS 3rd ADD. TO THE VILLAGE OF CAMBRIDGE, OHIO, AND MORE FULLY DESCRIBED IN A DEED FROM JAS. J. BURNS AND WIFE TO GEO. W. BROOM, RECORDED IN VOL. ⁴⁵~~46~~ PAGE 301 RECORDS OF GUERNSEY COUNTY OHIO. THE LOT NUMBERS ARE IN BLUE INK. THE DIMENSIONS ARE IN RED INK AND DENOTE FEET.

(SEAL) O.M. HOGE, SURV.

THE STATE OF OHIO, GUERNSEY CO. SS:

I HEREBY CONFIRM THE ABOVE PLAT SO FAR AS IT INCLUDES MY PROPERTY THE STREETS AND ALLEYS THEREON TO PUBLIC USE AND HEREBY ACKNOWLEDGE THE SAME TO BE MY VOLUNTARY ACT FOR THE USES AND PURPOSES THEREIN MENTIONED. SIGNED AND ACKNOWLEDGE IN MY PRESENCE THIS 15th DAY OF SEPT. 1894.

(SEAL) O.M. HOGE, CO. SURV. GEO. W. BROOM

I, W.W. STEWART, CLERK OF THE INCORPORATED VILLAGE OF CAMBRIDGE, OHIO HEREBY CERTIFY THAT THE ABOVE PLAT OF BROOMS SECOND ADDITION TO CAMBRIDGE HAS BEEN APPROVED AND ACCEPTED BY THE COUNCIL OF THE SAID INCORPORATED VILLAGE AND BY SAID COUNCIL ORDERED TO BE RECORDED AS A SUB-DIVISION TO SAID VILLAGE.

W.W STEWART, CLERK (SEAL)

TRANSFERRED SEPT. 24, 1894, J.E. McCLELLAND, AUD.

FEEES PD.

ENTERED SEPT. 24, 1894 AT 1 P.M.

RECORDED SEPT. 25, 1894

ATTEST W.F. PADGITT, RECORDER

